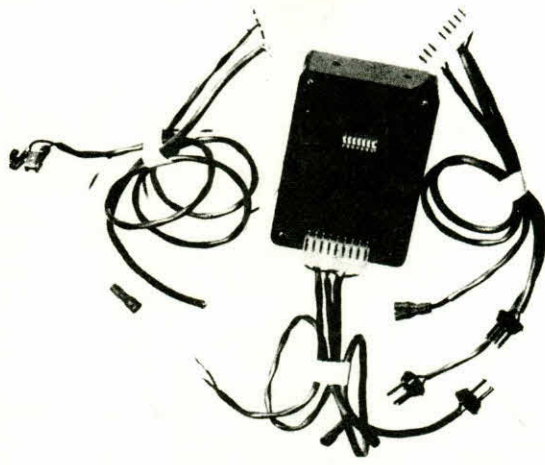


Lieberman Music Company
LOCAL - 887-5300
MN. WATS 800-352-2802
OUT-STATE 800-328-2960

\$80.⁰⁰
 each
STOCK NO.
 633 - Continental Corsair
 634 - Vendo
 635 - Smokeshop
 636 - Rowe
 Guaranteed one year



- Requires only changing wire harness
- Prices to \$6.35 in 5¢ increments
- Solid State - No Moving Parts
- 5 Minute Installation on Location - No special tools required
- Wrong installation will not burn out unit
- Machine Cannot Jackpot
- Service Calls Cut By 75%
- Uses existing coin switches on Vendo, Continental and Automatic Products machines

SPECIALS OF THE MONTH
WHILE THEY LAST!
ZIP "FITS-ALL" COIN COMPUTER™

LMC

Lieberman Music Company
 9549 Penn Avenue South · Minneapolis, Minnesota 55431



First Class

LMC News Notes

Volume 2, Number 2

February 1983

Atari Technical Update

New Game Pole Position™

Fuse F-3 used in the Power Supply Tray is a 25 Amp fuse. If the F-3 label indicates a 20 Amp, change label to show 25 Amp fuse. Also, make the appropriate change to the schematic (SP-218) on page 3B.

Make the following changes to the Service Manual TM-218:

Page 1-6, Figure 1-4: The On/Off positions of the PCB option switches are reversed.

Actually up should be Off and down should be On.

Page 3-11, Steering Wheel parts list: The Radial Optical Coupler part number should read 030369-02. The 01 is not and should not be used.

Page 1-9, Switch Settings: Staple the accompanying Pole Position Qualifying Time to this page. The table lists all the qualifying time for each starting pole position and difficulty levels. You may want to make an extra copy to staple inside the game for easy reference.

Switch Settings for Qualifying Lap Times

9L Option Switches			Self-Test Practice Rank	Level of Difficulty	Beat This Many Seconds to Qualify for Position:							
1	2	3			1	2	3	4	5	6	7	8
On	Off	On	F	Easy	66	68	70	73	75	77	80	82
Off	Off	On	E		65½	67½	70	72½	74½	76½	79	81
On	On	On	H		59½	61	63	66	68	70	72	75
On	On	Off	D		59	61	63	65	67	69	71	74
Off	On	Off	C		58½	60	62	64	66	68	70	73
On	Off	Off	B	58	60	62	64	66	68	70	72	
Off	Off	Off	A	57½	59	61	63	65	67	69	71	
Off	On	On	G	Hard	57	59	61	63	65	67	69	71

◀ Manufacturer's recommended settings

Nintendo of America, Inc. Service Bulletin

Special Service Bulletin

#DJR-02

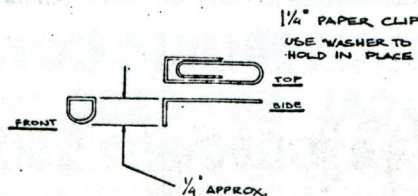
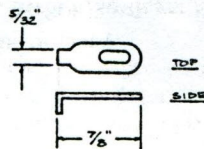
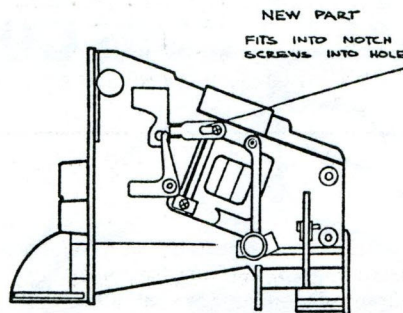
Subject: Model #730 Coin Selector

As some of you may already know, there is a problem with the model #730 Coin Selector in that a nickel or penny flipped through the coin entry just right, will continue through the mechanism and establish credit.

The solution to this problem is to **add a small metal piece to the selector** as shown in the enclosed drawing. This piece can be made from 18 gauge steel or even from a paper clip as shown in the drawing. This piece is also available to our distributors at no charge. The **threaded hole** in the coin selector is a M3 x 6MM size. If you cannot locate a screw this size, you can remove one of the machine screws from the power supply cage and use it.

If you have any problems or questions concerning this or any other matter please feel free to call at 206 882-2040 or 800 633-3236. Also, please make note of these new phone numbers for all future service calls.

Jon Pedersen
Technical Service Manager
Nintendo of America, Inc.



Bally Service Bulletins

Universal Tester Audio/Video Connector

The Audio/Video Connector is located on the Tester's Interface Connector Panel. This is an M.R.A.C. 14 pin configuration. The signals supplied to each of the 14 pins are as follows:

A Horiz. Sync.	J +5 Volts
B Vertical Sync.	K Audio 1
C Red	L Return
D Green	M Audio 2
E Blue	N Return
F Ground	P Audio 3
H V-Audio	R Return

On the other end of this cable you will find 2 connectors, one of which an AMP 9 pin configuration. This connector is to be used for connection to your speaker system. The signals supplied to each of the 9 pins are as follows:

1 Audio 1	6 Return 1
2 +5 Volts	7 Ground
3 V-Audio	8 Return 3
4 Return 2	9 Audio 3
5 Audio 2	

Games: Tron & Solar Fox

Subject: Power Supply (A082-90412C000)

1. A 68 ohm 1/2 watt resistor has been added between +5VDC and common.
2. This resistor is a dummy load for proper voltage measurement when the logic board is disconnected.
3. The dummy load resistor will not effect the logic system if it is missing.

Game: Blueprint

Subject: Rom Self-Test Display

1. Due to an early program change, the Rom self-test display read out in the operating manual was not used.
2. The following self-test display read outs are valid.

Program #1

0	1	2	3	4	5	6	7
82	09	30	D6	D5	FF	FF	7F

Program #2 (with falling flower pots)

0	1	2	3	4	5	6	7
00	56	10	DF	CE	FF	7F	7F

3. The Rom self-test display is the actual check sum total.

Andy Ducay
Service Manager