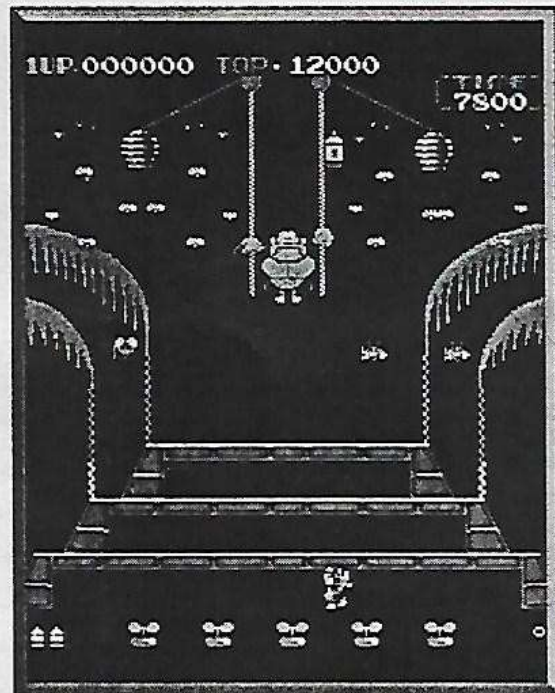
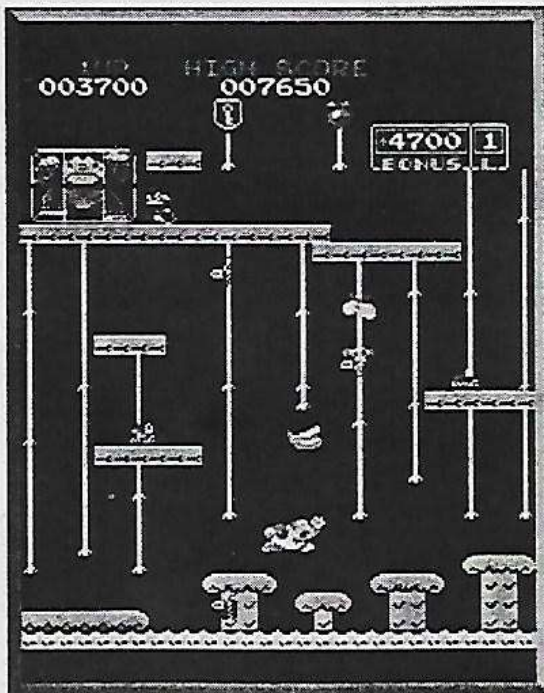
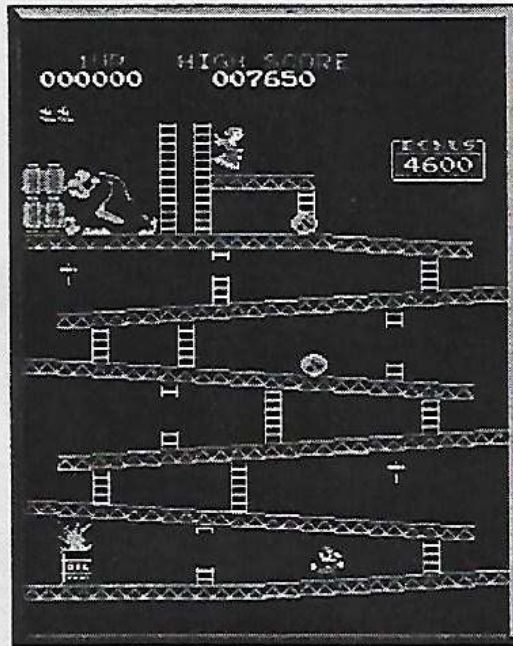


Multi-Kong

CGA / VGA JAMMA



VER100

● P C B DIP Switch Settings

DIP SW3		1	2	3	4
Display Mode (CRT)	CGA-15.75khz		OFF		
	VGA-31.5khz		ON		

I、System Setup

1、Keep pressing TEST SW and power on to enter system testing screen

Page 1 : Screen testing, Press TEST SW to enter next page.

Page 2 : System DIPSW Setup, Press setup to finish this step, Press TEST SW to enter next page .

System DIPSW Setup

DIP SW1		1	2	3	4	5	6	7	8
COIN 1	1 coin 1 credit	OFF	OFF	OFF	OFF				
	1 coin 2 credit	ON	OFF	OFF	OFF				
	1 coin 3 credit	OFF	ON	OFF	OFF				
	1 coin 4 credit	ON	ON	OFF	OFF				
	2 coin 1 credit	OFF	OFF	ON	OFF				
	2 coin 2 credit	ON	OFF	ON	OFF				
	2 coin 3 credit	OFF	ON	ON	OFF				
	2 coin 4 credit	ON	ON	ON	OFF				
	3 coin 1 credit	OFF	OFF	OFF	ON				
	3 coin 2 credit	ON	OFF	OFF	ON				
	3 coin 3 credit	OFF	ON	OFF	ON				
	3 coin 4 credit	ON	ON	OFF	ON				
	4 coin 1 credit	OFF	OFF	ON	ON				
	4 coin 2 credit	ON	OFF	ON	ON				
	4 coin 3 credit	OFF	ON	ON	ON				
	4 coin 4 credit	ON	ON	ON	ON				
COIN2	1 coin 1 credit					OFF	OFF	OFF	OFF
	1 coin 2 credit					ON	OFF	OFF	OFF
	1 coin 3 credit					OFF	ON	OFF	OFF
	1 coin 4 credit					ON	ON	OFF	OFF
	2 coin 1 credit					OFF	OFF	ON	OFF
	2 coin 2 credit					ON	OFF	ON	OFF
	2 coin 3 credit					OFF	ON	ON	OFF
	2 coin 4 credit					ON	ON	ON	OFF
	3 coin 1 credit					OFF	OFF	OFF	ON
	3 coin 2 credit					ON	OFF	OFF	ON
	3 coin 3 credit					OFF	ON	OFF	ON
	3 coin 4 credit					ON	ON	OFF	ON

4 coin 1 credit					OFF	OFF	ON	ON
4 coin 2 credit					ON	OFF	ON	ON
4 coin 3 credit					OFF	ON	ON	ON
4 coin 4 credit					ON	ON	ON	ON

DIP SW2		1	2	3	4	5	6	7	8
Demo music	Yes	OFF							
	No	ON							
Game demo	No		OFF						
	Yes		ON						
Demo music mode	Mode1			OFF					
	Mode2			ON					
Free play	No				OFF				
	Yes				ON				
Cabinet	Upright					OFF			
	Cocktail					ON			
Donkey Kong	Enable						OFF		
	Disable						ON		
Donkey Kong Junior	Enable							OFF	
	Disable							ON	
Donkey Kong 3	Enable								OFF
	Disable								ON

* DIPSW 2-6,2-7 and 2-8 are ON , all games are enabled.

Page 3 : **Donkey Kong DIPSW Setup**, Press setup to finish this step, Press TEST SW to enter next page .

Donkey Kong DIPSW Setup

DIP SW1		1	2	3	4	5	6	7	8
Life	3	OFF	OFF						
	4	ON	OFF						
	5	OFF	ON						
	6	ON	ON						
Extra life	7000			OFF	OFF				
	10000			ON	OFF				
	15000			OFF	ON				
	20000			ON	ON				

Page 4 : **Donkey Kong Junior DIPSW Setup**, Press setup to finish this step, Press TEST SW to enter next page .

Donkey Kong Junior DIPSW Setup

DIP SW1		1	2	3	4	5	6	7	8
Life	3	OFF	OFF						
	4	ON	OFF						
	5	OFF	ON						
	6	ON	ON						
Extra life	7000			OFF	OFF				
	10000			ON	OFF				
	15000			OFF	ON				
	20000			ON	ON				

Page 5 : **Donkey Kong 3 DIPSW Setup**, Press setup to finish this step, Press TEST SW to enter next page .

Donkey Kong 3 DIPSW Setup

DIP SW1		1	2	3	4	5	6	7	8
Life	3	OFF	OFF						
	4	ON	OFF						
	5	OFF	ON						
	6	ON	ON						
Extra life Bonus	30000			OFF	OFF				
	40000			ON	OFF				
	50000			OFF	ON				
	None			ON	ON				
Additional Bonus	30000					OFF	OFF		
	40000					ON	OFF		
	50000					OFF	ON		
	None					ON	ON		
Difficulty	Easy							OFF	OFF
	Medium							ON	OFF
	Hard							OFF	ON
	Hardest							ON	ON

Page 6 : **Volume Adjust**, Press setup to finish this step, Press TEST SW to enter next page .

Page 7 : **I/O Test**, Power off to exit.

2 - The P C B voltage of +5v pin can not exceed +5.5v .

II 、 JAMMA Wire Map

	Part Side	Solder Side	
GND	1	1	GND
GND	2	2	GND
+5V	3	3	+5V
+5V	4	4	+5V
	5	5	
+12V	6	6	+12V
	7	7	
1P COIN METER	8	8	2P COIN METER
	9	9	
SPEAKER +	10	10	SPEAKER —
	11	11	
(CGA)VIDEO R	12	12	(CGA)VIDEO G
(CGA)VIDEO B	13	13	(CGA)VIDEO SYNC
GND	14	14	
TEST	15	15	
1P--COIN	16	16	2P--COIN
1P--START	17	17	2P--START
1P--UP	18	18	2P--UP
1P--DOWN	19	19	2P--DOWN
1P--LEFT	20	20	2P--LEFT
1P--RIGHT	21	21	2P--RIGHT
1P—S1	22	22	2P—S1
1P---S2	23	23	2P—S2
1P---S3	24	24	2P—S3
	25	25	
	26	26	
GND	27	27	GND
GND	28	28	GND