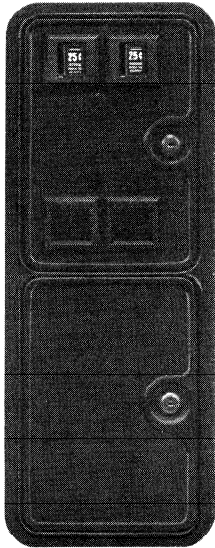




# 2822 SERIES GAME DOOR



### OVERALL DIMENSIONS

Height ..... 20-7/8-Inches  
 Width ..... 7-7/8-Inches  
 Depth ..... 4-1/2-Inches

### RECOMMENDED CABINET OPENING

Height ..... 19-7/8-Inches  
 Width ..... 7-1/4-Inches  
 Corner Radius ..... 1-Inch

SHIPPING WEIGHT ..... 14 Pounds

FRONT VIEW

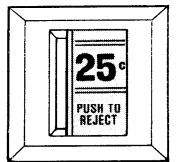
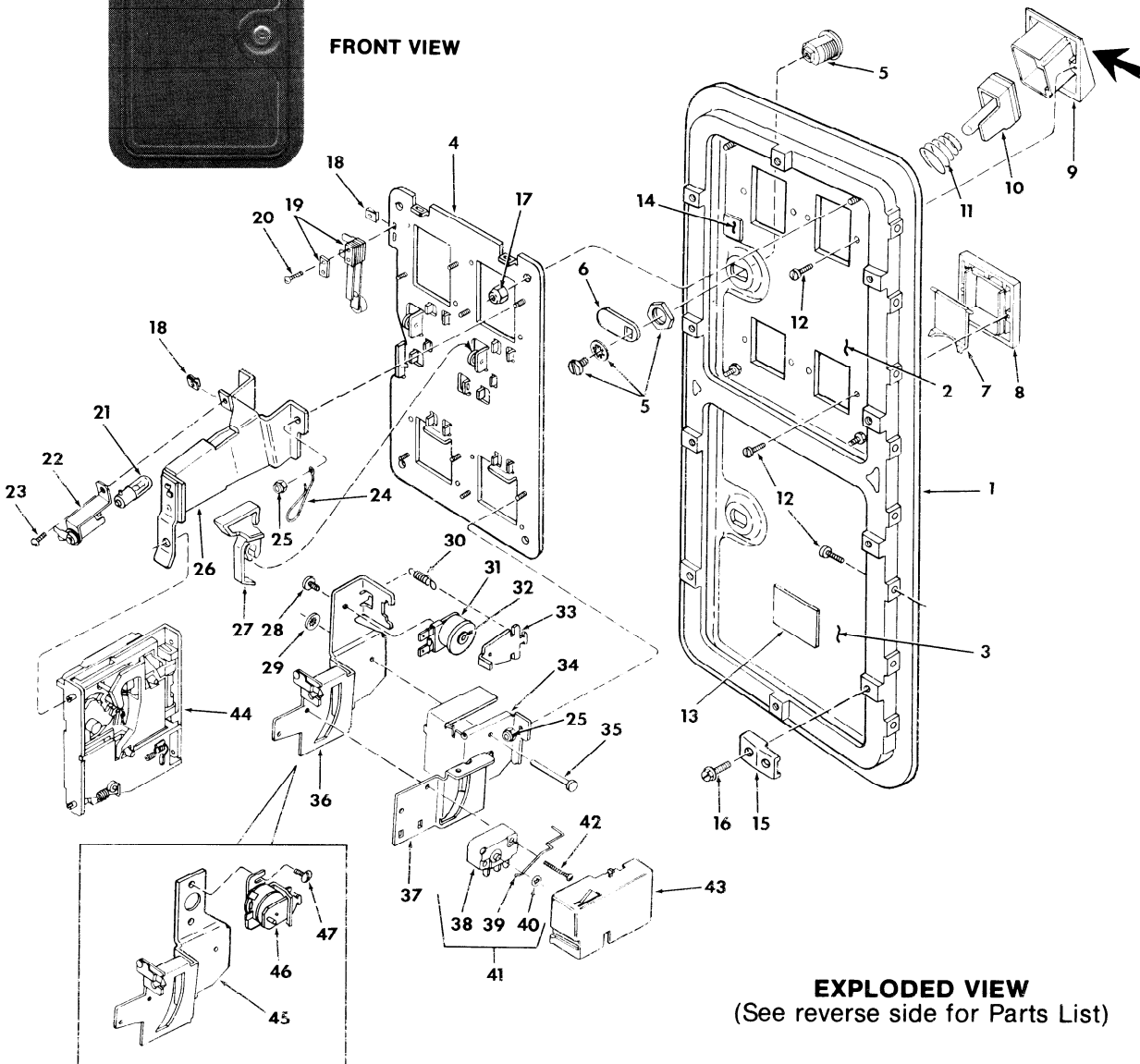


FIG. 2

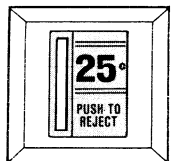
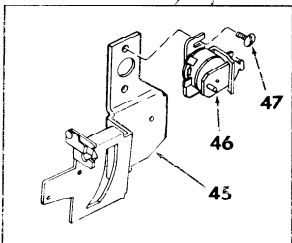


FIG. 1



ALTERNATE STYLE

**EXPLODED VIEW**  
 (See reverse side for Parts List)

## 2822 SERIES GAME DOOR PARTS LIST

Index No.	Part No.	Description	Index No.	Part No.	Description
1	905640	Coin Door Frame	24	904722	Wire Key Holder
2	404696-2	Coin Door	25	400-4	Nut
3	404696	Service Door	26	404645	Coin Inlet Chute Assembly
4	404697-1	Coin Door Inner Panel	27	904583	Coin Return Lever
5	404897	5/8-Inch Tubular Key Lock	28	108B5-4	Screw
	404765	5/8-Inch Flat Key Lock	29	904936	A.P.F. Bar Keeper
	404767	7/8-Inch Flat Key Lock	30	905928	Spring
6	905651-4	CAM (Used with 404897)	* 31	404603	C.R.E.M. Coil (10/12vdc)
	905651-3	CAM (Used with 404765)		404603-1	C.R.E.M. Coil (6vdc)
	905651-2	CAM (Used with 404767)		404603-2	C.R.E.M. Coil (24vdc)
7	905484	Coin Return Door		404603-3	C.R.E.M. Coil (24 vac)
8	904590-2	Coin Return Bezel		404603-5	C.R.E.M. Coil (28 vdc)
9	904588-2	Coin Inlet Bezel (Used with Fig. 1)		404603-4	C.R.E.M. Coil (48vac)
	905425-4	Coin Inlet Bezel (Used with Fig. 2)		404603-7	C.R.E.M. Coil (12vac)
	905425-5	Coin Inlet Bezel (1.213 Coin Diameter)		404603-9	C.R.E.M. Coil (117vac)
	905425-6	Coin Inlet Bezel (1.312) Coin Diameter	32	905927-2	C.R.E.M. Core (D.C. Only)
10	404734	Button Assembly (Used with Fig. 1)		406104	C.R.E.M. Core (A.C. Only)
	404604	Button Assembly (Used with Fig. 2)	33	404602	Armature Assembly
11	903494	Spring	34	904598-1	Coin Return Box
12	325-4-4	Screw	35	904935	A.P.F. Bar
13	906030	Identification Label	36	404601	Switch and C.R.E.M. Bracket
14	904822	Slam Switch Insulation	37	904701	Coin Chute
15	905658	Mounting Clip	38	904845	Coin Switch
	905658-1	Mounting Clip Slide	39	904710	25¢ Switch Wire
16	328-10-8	Screw	40	900651	Switch Wire Retainer
17	400-8	Nut	41	404353	25¢ Coin Switch Assembly
18	904712	"U" Type Fastener	42	100-4-12	Screw
19	904704	Slam Switch Assembly	43	904762-1	Switch Cover
20	116-4-8	Screw	44	5301-13	25¢ NORYL Acceptor
21	904716	Lamp (6.3 volt)		563-20	25¢ Metal Acceptor
	904716-1	Lamp (12/14 volt)	45	404428	Switch and C.R.E.M. Bracket
	904716-2	Lamp (24 volt)	* 46	404354	C.R.E.M. Assembly (10/12vdc)
	904716-9	Lamp (120 volt)		404354-1	C.R.E.M. Assembly (6vdc)
22	904717	Lamp Socket		404354-2	C.R.E.M. Assembly (24vdc)
23	110-4-6	Screw		404354-3	C.R.E.M. Assembly (24vac)
				404354-5	C.R.E.M. Assembly (28 vdc)
				404354-4	C.R.E.M. Assembly (48vac)
				404354-7	C.R.E.M. Assembly (12vac)
				404354-9	C.R.E.M. Assembly (117vac)
			47	100-6-4	Screw

\* Index No. 31 used with Index No. 36 only.  
 Index No. 46 (Alternate Style) used with Index No. 45 only.



**COIN ACCEPTORS, INC.**  
 300 HUNTER AVE.  
 ST. LOUIS, MISSOURI 63105  
 800-325-2646

**COIN ACCEPTORS, CANADA**  
 868 PROGRESS AVE.  
 SCARBOROUGH (TORONTO), ONTARIO M1H 2X7  
 416-438-6314

COINCO PUBLICATION NO. 906127 Rev. 2 10/83  
 Printed in U.S.A.