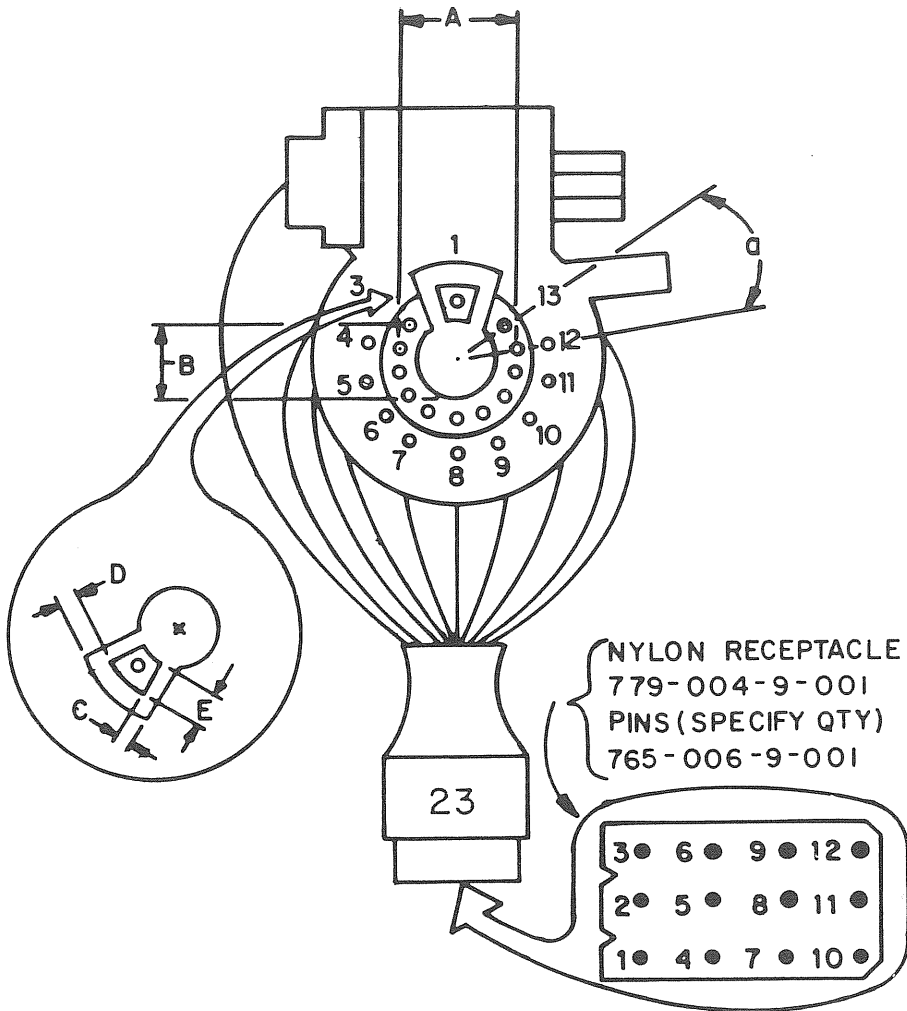


CRT ADAPTER



ASSEMBLY WITH WIRES — 527-087-9-001



NOTE: NO CONTACTS AT PIN POSITIONS 3 AND 13.

FITS CRT DIMENSIONS:

A = pin circle diameter = 15.24 mm/0.600" nom.
 a = angular pin spacing = 25-5/7°
 B = post diameter = 11.0 mm/0.433" max.
 C = keyway width = 1.52 mm/0.060" nom.
 D = keyway width = 1.27 mm/0.050" nom.
 E = keyway depth = 5.59 mm/0.220" min.

WIRING SCHEME

CRT SOCKET PIN	WIRE COLOR	NYLON RECEPTACLE
1	BLK	12
2	keyway	—
3	—	—
4	YEL/BLU	N.C.
5	YEL/GRN	4
6	GRN	7
7	YEL/RED	10
8	RED	6
9	WHT	1
10	BRN	2
11	BLUE	8
12	WHT/RED	N.C.
13	—	—
14	keyway	—



B & K-Precision, Factory Service Department
 Maxtec International Corporation
 6470 West Cortland Street
 Chicago, Illinois 60635
 Telephone: (312) 889-1448