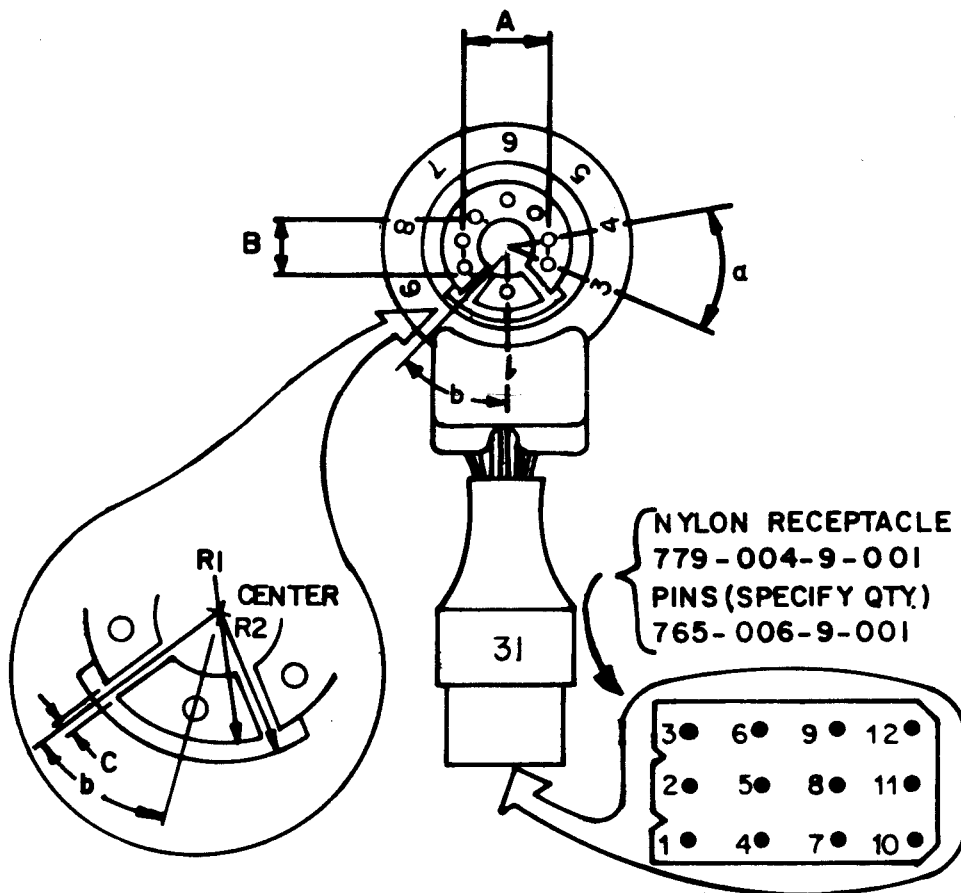


# CRT ADAPTER



## MODEL CR-31

SOCKET WITHOUT WIRES — 749-106-9-001



### WIRING SCHEME

CRT SOCKET PIN	WIRE COLOR	NYLON RECEPTACLE
1	WHT	12
2	keyway	—
3	GRN	8
4	BLK	1
5	BRN	2
6	RED	3
7	ORG	6
8	BLU	9
9	YEL	7
10	keyway	—

#### FITS CRT DIMENSIONS:

A = pin circle diameter	= 12.0 mm/0.472" nom.
a = angular pin spacing	= 36°
b = angular keyway spacing	= 38°
B = post diameter	= 8.2 mm/0.323" max.
C = keyway width	= 1.1 mm/0.043" max.
R1 = inner radius keyway	= 8.66 mm/0.341" nom.
R2 = outer radius keyway	= 9.76 mm/0.384" nom.



**BK PRECISION**

B & K-Precision, Factory Service Department  
Maxtec International Corporation  
6470 West Cortland Street  
Chicago, Illinois 60635  
Telephone: (312) 889-1448

Used with B &amp; K-Precision Models: 467, 470

TUBE TYPE	HEATER VOLTAGE	TUBE TYPE	HEATER VOLTAGE	TUBE TYPE	HEATER VOLTAGE
270AEB22	6.3	A34JAH00X	6.3	A46JJS03X	6.3
270AKB22	6.3	A34JAJ01X	6.3	A48ABK00X	6.3
320CSB22	6.3	A34JAN00X	6.3	A48JAQ00X	6.3
370KRB22	6.3	A34JAN30X	6.3	A48JDD02X	6.3
370KSB22	6.3	A36JAR50X01	6.3	A51JAR00X	6.3
370LGB22	6.3	A36JFT00X	6.3	A51JAR50X	6.3
370LHB22	6.3	A36JJM00X	6.3	A51JAR65X	6.3
370RJB22	6.3	A36JHP00X	6.3	A53JAN32X	6.3
510ABWB22	6.3	A36JHP30X	6.3	A53JAQ36X	6.3
510YWB22	6.3	A38EAC00X	6.3	A63JDP20X	6.3
510YXB22	6.3	A38EAP00X01	6.3	A63JDP36X	6.3
A18JHC30X	6.0	A38JAN81X	6.3	A63JDP37X	6.3
A22JCM00X	6.3	A38JCD05X	6.3	E2957	6.3
A22JCN00X	6.3	A38JFY05X	6.3	E2965	6.3
A22JFR00X	6.3	A41JHP00X	6.3	M23JGD00X	6.3
A26JGZ01X	6.3	A41JHP90X	6.3	M23JGE00X	6.3
A29JAD00X	6.3	A43JCD05X	6.3	M29JAD01X	6.3
A29JN60X	6.3	A43JCE01X	6.3	M29JGF00X	6.3
A34EAC00X	6.3	A46JAR50X	6.3	M36JGB01X	6.3
A34JAE00X	6.3	A46JAR60X	6.3	M36JJQ00X	6.3
		A46JDL00X	6.3		

In order to keep your set-up chart up-to-date, it is recommended that you subscribe to the B & K-Precision chart mailing service. These mailings will occur in May and November of each year and will include all the tubes presently listed on your chart plus all new types of CRT's that have come out since the last mailing.

If you wish to take advantage of this service, contact:

**B & K-PRECISION**, Factory Service Department  
 Maxtec International Corporation  
 6470 West Cortland Street  
 Chicago, Illinois 60635  
 Telephone #: (312) 889-1448

For information on ordering a subscription.

